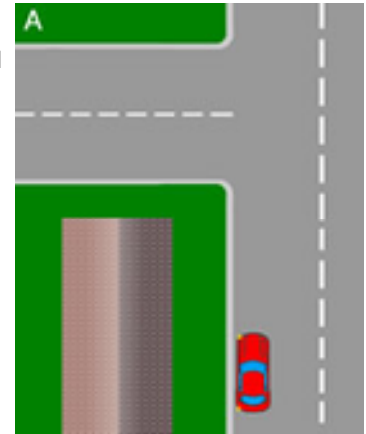


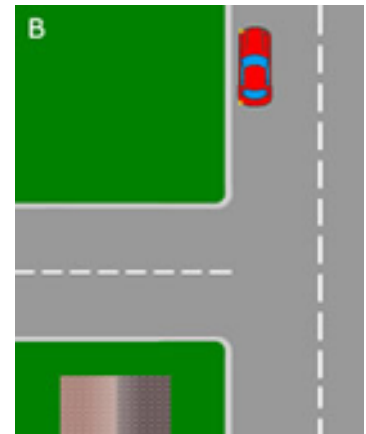
During your test, you will be asked to park up on the left on 3 or 4 occasions. This will be to assure the examiner that you can park safely and legally and in a way that isn't going to inconvenience others. It may also be that he is going to ask you to perform the reverse around a corner manoeuvre.

A. The Examiner will ask you to park up on the left. Look in the main and left mirrors and indicate if necessary (If any cars, bikes etc are approaching from any direction, then apply the indicators). Once parked, cancel the indicators, apply the hand brake and select neutral. Ensure that you don't park opposite somebody's driveway on the left.



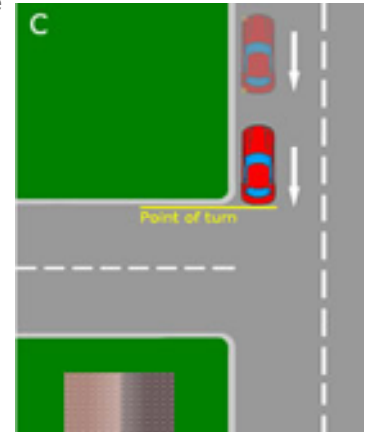
B. Before moving off from your parked position, check your main and right mirror, blind spot and indicate if necessary. As you drive opposite the left turn that you are going to reverse into, check your main and left mirrors, indicate to the left if needed.

Park up on the left around 2 to 3 car lengths past the corner leaving about a steering wheel width distance away from the curb. Parking too close will increase your chances of hitting the curb when you begin reversing. Again, avoid stopping opposite a driveway on the left. Once stopped, apply the hand brake and select reverse gear.



C. Before you start to move the car, use appropriate observations to ensure there are no approaching vehicles, pedestrians or cyclists nearby. If so, wait till they pass. You now need to reverse back to your point of turn. this is where the rear of your car is level with the bend of the road you are reversing into. To help you understand where this is, look out the rear passenger side window and wait for the corner to come into view, or using the left mirror, wait till all the straight curb has disappeared so that you can just see the corner of the road in the mirror.

Ensure you use appropriate observations throughout the manoeuvre. This includes looking out the rear window. When you reach the point of turn, steer to the left one complete turn of the wheel. Using your left mirror, ensure that the corner of the road you're reversing round stays in view in the mirror adjusting the steering if the curb gets too close or too far away. Observations at this point are essential as the front of your car will be at an angle into the road.



D. Once you round the corner and become parallel with the curb, straighten the wheels. You should know when to straighten the wheels when the view of your car and the curb look the same in the left mirror as when you started the manoeuvre. Reverse back to around 4 car lengths away from the corner or when the examiner asks you to stop. Ensure that at no point you hit the curb or end up on the other side of the road. Throughout the entire manoeuvre, keep looking around for approaching vehicles, cyclists and pedestrians and stop if necessary. Keeping your car slow using clutch control is important.

Once stopped, the examiner will ask you to carry on ahead. Ensure that before you move off, check your main and right mirror and the blind spot to your right. Also look in the relevant mirrors and indicate which direction you are taking.

